

Getting started guide

As a minimum, you will need:

- A ProWeatherStation or equivalent Easyweather compatible weather station (see “Where can I get one?”)
- An internet connected, Windows (XP, Vista, or 7) compatible laptop or computer
- Cumulus software v1.9.4 (or equivalent)
- AA batteries (for the base station)

Getting started:

1. Purchase a weather station, look for models that have:
 - a. Wireless Sensor Module
 - b. Solar powered, battery backed-up sensor module
 - c. PC connectable base station
 - d. Preferably EasyWeather (fineOffset) software compatibility
2. Set up the weather station in a convenient location in your yard/property/paddock, consider:
 - a. Exposure
 - b. Accessibility
 - c. External sensor interference
3. Install batteries into the **base station** and follow the supplied instructions to configure and sync it to receive data from the sensor module. If done correctly sensor data should appear in all fields of the base station display.
4. Install EasyWeather v7.8 software on your laptop/computer (see links)
 - a. Connect the **base station** to your computer with the supplied USB cable, (windows should auto detect and install the appropriate USB drivers).
 - b. If correctly installed, data should have populated all fields and “USB Connected” should appear in bottom right corner as shown in **Figure 1**.
 - c. Click System -> Setting and configure settings as desired, **Figure 2** shows my preferred settings. Also adjust the relative pressure for your altitude.
 - d. Click save and exit EasyWeather software. **Do not have this running at same time as Cumulus.**
5. Install **Cumulus v.1.9.4** software on your laptop/computer (see links)
 - a. When installation is complete and runs for the first time a “Station Settings” screen will appear. Configure the settings as shown in **Figure 3**.
 - b. If using an EasyWeather compatible AWS, ensure you select “**Fine Offset (WH1080 etc)**” under the “Station Type” section
 - c. Click OK... with any luck your connected base station should be receiving data wirelessly from the sensor module outside, and populating the fields of the **Cumulus console display**.
 - d. Now click, Configuration -> Display Settings. Ensure “Minimize to Tray” is selected as shown in **Figure 4** (this will ensure that the display sits in the tray near the clock when minimized)
 - e. In the **Heading** section, name your weather station appropriately (this will appear on the Cumulus console display).
 - f. Click Ok when complete. Minimize Cumulus display console when done. *Remember: you will need to have Cumulus running(minimized) and your laptop/computer on continuously if you want to publish data on WoW (see Publishing to WoW)*

EasyWeather Software

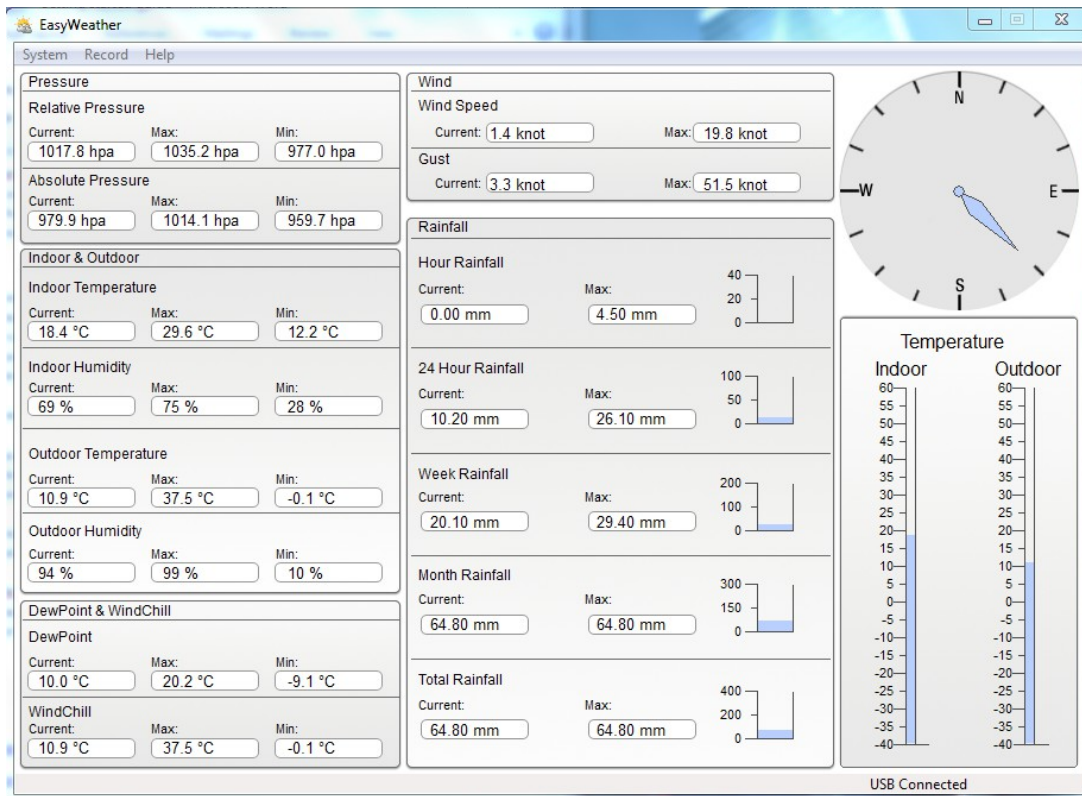


Figure 1

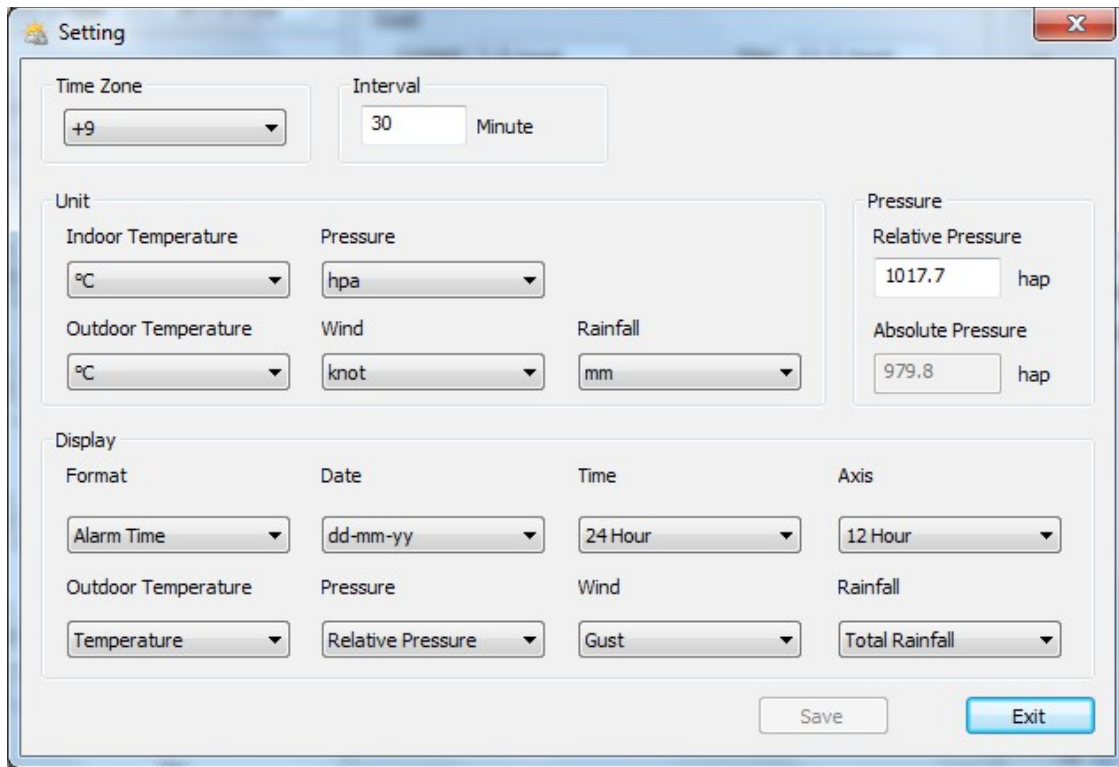
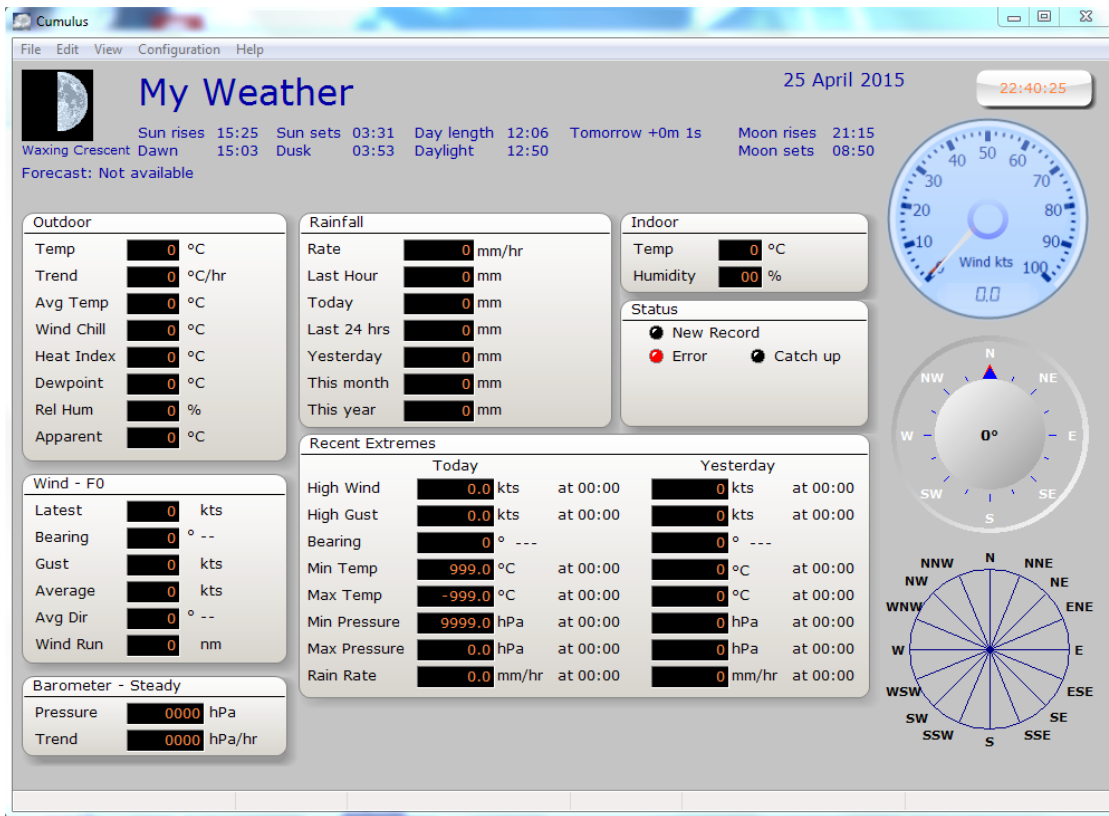


Figure 2

Cumulus Software



Cumulus console display

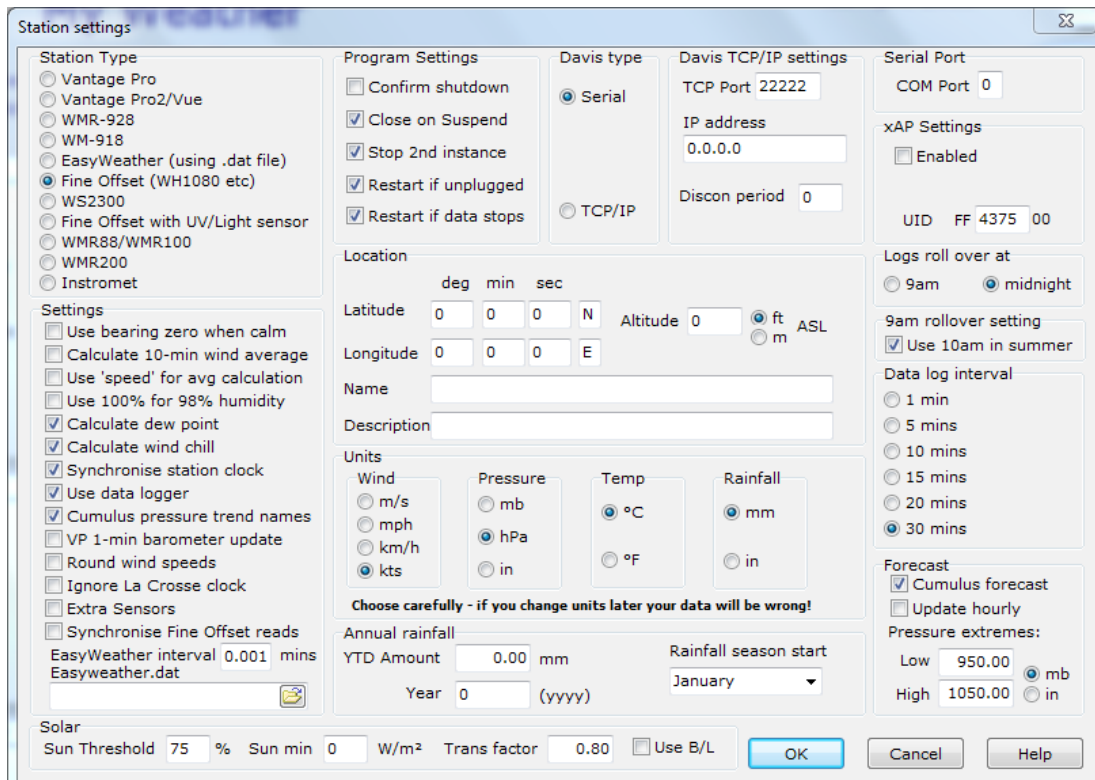


Figure 3

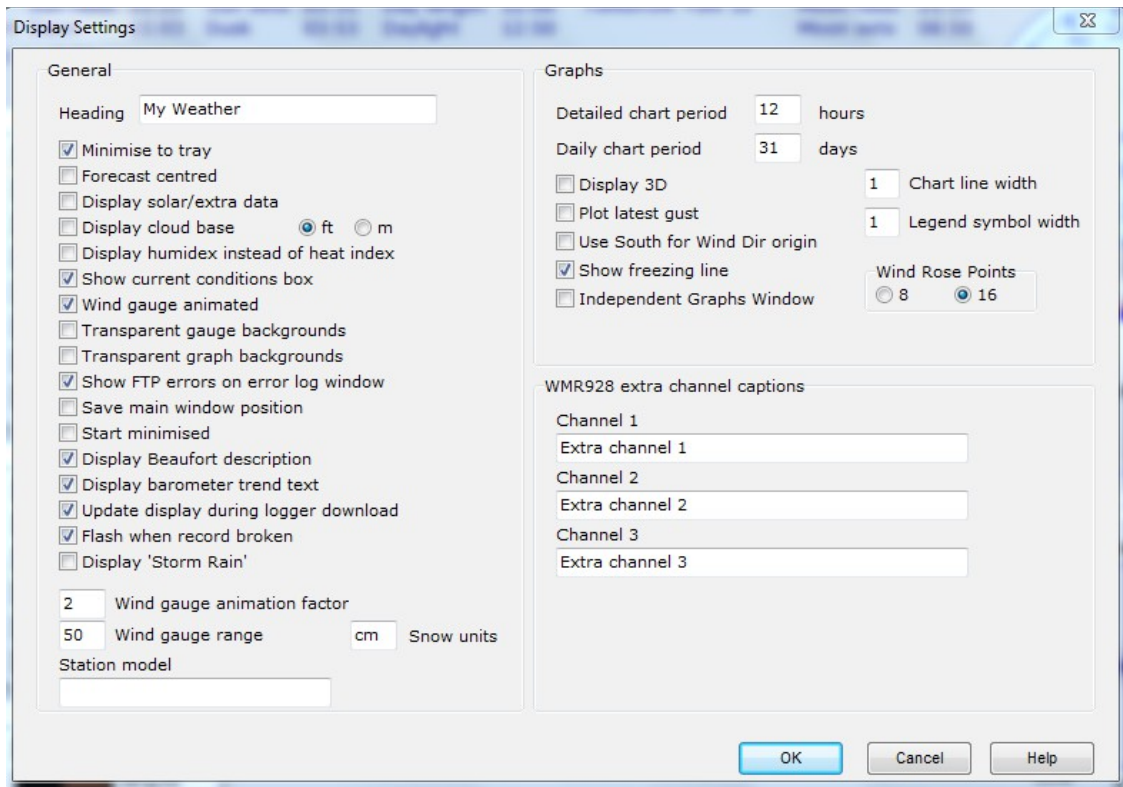


Figure 4

Where can I get one?

- Ebay: search: "Weather Station" (competitive prices, good range, free delivery)
- Bunnings (more expensive than Ebay)
- Jaycar (more expensive than Ebay)
-

Links:

<http://proweatherstation.com/easyweather/easyweather.htm> (ProWeatherStation software)

<http://sandysoft.com/downloads> (Cumulus software homepage)